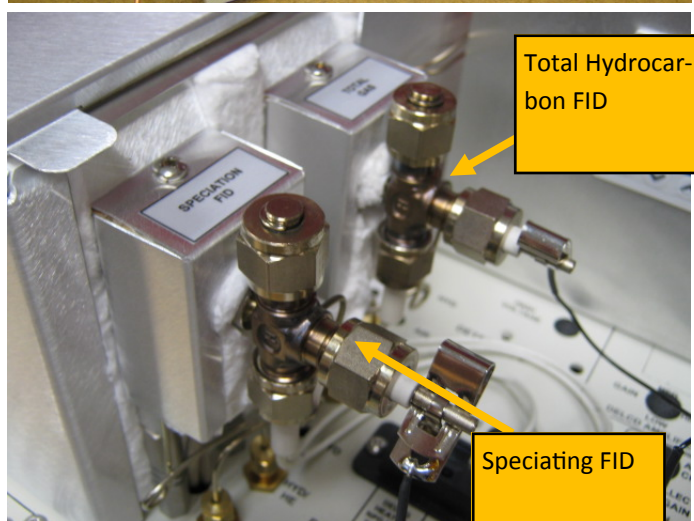
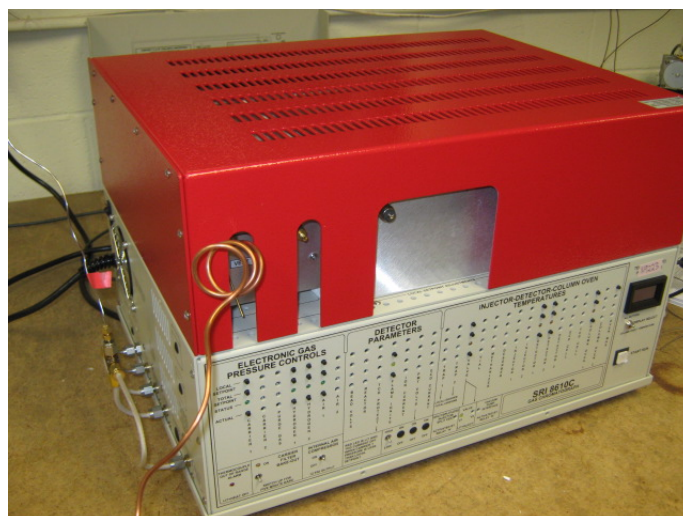
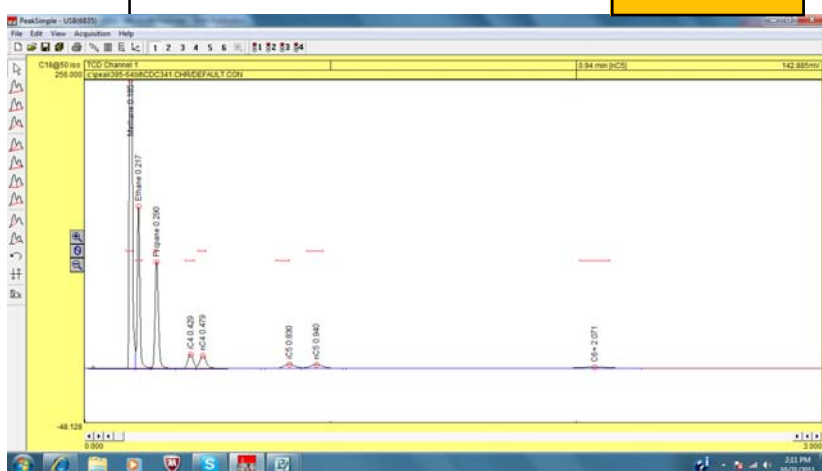


Mass Flow Controller Option for SRI Mudlogger GCs

The SRI Mudlogger configuration is available on either the 410 "rack mount" chassis (\$21,088.00) or on the 8610C desktop chassis (\$18,559.00) (**2022 pricing, prices subject to change, consult most recent price list.**)



Both configurations include two FID detectors. FID#1 speciates the sample into methane, ethane, propane, iso and normal butane, iso and normal pentane and then C6+ in a backflush. C1-C5 are eluted in less than 60 seconds as shown in the chromatogram at right.



SRI Tech Support: 310-214-5092

Mass Flow Controller Option for SRI Mudlogger GCs

The second FID measures the “Total Hydrocarbons” (THC) in the sample gas, but requires that the sample gas be presented to the GC at a constant pressure (typically 10psi). A steady reading requires that the pressure be held constant by a good quality pressure regulator.

Optionally, a true mass flow controller (**SRI part# 8670-6010 price: \$2,339.00, 2022 pricing, prices subject to change, consult most recent price list**) may be mounted which keeps the flow to the “THC” FID constant even if the inlet pressure changes.

It is rated at 40psi inlet max.

The flow controller may be set from 20-500ml/min from the simple keypad. This flow is split by about 100:1. So if set to 100, there would be 1ml/minute going to FID#2 and 99ml/minute exit out the vent.

